



- Reliable professional solutions in all areas of archaeological work and for all types of client
- 35 years of fieldwork experience
- A wide range of integrated specialist services
- Part of London's Global University - at the forefront of international research in archaeological sciences
- Committed to working with local communities on the basis of sustainable and ethical approaches

A division of the Centre for Applied Archaeology, University College London



www.archaeologyse.co.uk



Units 1 & 2, 2 Chapel Place, Portslade, East Sussex, BN41 1DR, UK

ARCHAEOLOGY SOUTH-EAST SERVICES

Field Archaeology Services for Developers



Expert services from the world-leading
Institute of Archaeology

fau@ucl.ac.uk

01273 426830

www.archaeologyse.co.uk



Archaeology & Development

The English landscape bears witness to a complex past and in many places it is difficult to build without finding archaeological remains. Such remains are protected through the planning process, making the management of archaeological risk a necessary precaution. Archaeological excavations need not be unduly expensive or time consuming, but they require careful planning.

Why work with Archaeology South-East?



We have spent the last 35 years using our expert knowledge to help developers working in the historic environment. We understand the construction and planning process, and use our project management skills to provide a planned response to all fieldwork requirements. We can provide a clear assessment of the costs and issues involved. Our authoritative advice reduces the risk of the unexpected, allowing for confident forward planning.

We also work closely with local communities to maximise the public benefit of any discoveries made – offering a wide range of public relations opportunities.

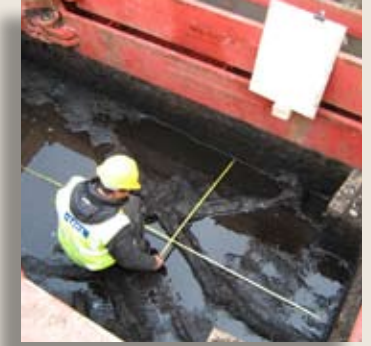
Clients

Archaeology South-East has worked for hundreds of clients from the public and private sector. These include English Heritage, the National Trust, the Environment Agency, county councils, leading engineering and development companies, Diocesan archaeological advisors and quarry companies as well as local builders, architects and householders.



Services

- Preliminary research, including environmental impact assessment
- Survey – including field walking, topographic and geophysical survey
- Evaluation – undertaken to locate and assess the importance of buried remains – using trial trenching, test pits or bore-holes
- Preparation of schemes of investigation for approval by Planning Authorities and English Heritage, based on mitigating impact through excavation or preservation *in situ*
- Archaeological excavation (including rural, wetland, urban, burial and industrial archaeology)
- Watching briefs.



Our Expertise

We are one of the longest established and best trained archaeological teams in the world. Our project managers deploy more than fifty archaeologists to meet the needs of our clients.

Our Director, Dr Dominic Perring FSA, MIFA, has managed archaeological projects for over thirty years. Formerly Head of the Greater London Archaeology Advisory Service, he also teaches archaeological law and project management at University College London.

